

# Majestic Theater Main Stage

## Technical Portfolio

### General Information

06/2024

**Address:** Majestic Theater  
25 Carlisle Street  
Gettysburg, PA 17325

	<i>Phone</i>	<i>e-mail</i>
<b>Staff:</b> Brett W. Messenger, Executive Director	(717)-337-8237	<a href="mailto:MajesticTheater@gettysburg.edu">MajesticTheater@gettysburg.edu</a>
Jessica Rudy, Marketing Director	(717)-337-8235	<a href="mailto:jarudy@gettysburg.edu">jarudy@gettysburg.edu</a>
Matt Moon, Patron Services Director	(717)-337-8204	<a href="mailto:mmoon@gettysburg.edu">mmoon@gettysburg.edu</a>
Kim Laughman, Office Coordinator	(717)-337-8237	<a href="mailto:klaughma@gettysburg.edu">klaughma@gettysburg.edu</a>
Administrative FAX number:	(717)-337-8232	
Jonathan Stiles, Technical Director	(717)-337-8238	<a href="mailto:jstiles@gettysburg.edu">jstiles@gettysburg.edu</a>
Weston Jackson ATD/Rental Coordinator	(717)-337-8229	<a href="mailto:wjackson@gettysburg.edu">wjackson@gettysburg.edu</a>

**Time Zone:** Eastern Standard

<b>Lodging:</b>	<u>Hotel Gettysburg</u> One Lincoln Square Gettysburg, PA 17325 (717) 337-2000 <a href="http://www.hotelgettysburg.com">www.hotelgettysburg.com</a>	<u>Days Inn Gettysburg</u> 865 York Rd. Gettysburg, PA 17325 (717) 334-0030	<u>Gettysburg Travelodge</u> 613 Baltimore Gettysburg, PA 17325 (717) 334-9281
-----------------	---	--	---

Quality Inns  
380 Steinwehr Ave.  
Gettysburg, PA 17325  
(717) 334-1103

Holiday Inn Express  
869 York Rd.  
Gettysburg, PA 17325  
(717) 337-1400

Courtyard Marriott  
115 Presidential Circle  
Gettysburg, PA 17325  
(717)334-5600

Wyndham Gettysburg  
95 Presidential Circle  
Gettysburg, PA 17325  
(717)339-0020

Best Western Gettysburg  
301 Steinwehr Ave.  
Gettysburg, PA 17325  
(717)334-1188

**Transportation:** Diana's Limo  
1-800-537-0671

<b>Airports:</b>	Harrisburg, PA	36 Miles
	Baltimore, MD	55 Miles
	Washington, D.C.	80 Miles
	Philadelphia, PA	117 Miles

## General Information

06/2024

**Restaurants:** *(in order of proximity to the Majestic Theater)*

*The following are near hotels/motels used by Theater visitors*

Kazue (sushi/noodles)	25 Carlisle St.	Mamma Ventura	13 Chambersburg St.
One Lincoln	1 Lincoln Square	Gerryowen Irish Pub	126 Chambersburg St.
Lincoln Diner	32 Carlisle St.	O'Rorke's	44 Steinwehr Ave.
Tacos Monarca	11 W. Railroad St.	Tania's Mexican	37 West St.
Antica Napoli	39 N. Washington St.	La Bella Italia	402 York St.
The Pub and Restaurant	21 Lincoln Sq.	Montezuma Restaurant	225 Buford Ave.
Blue and Gray bar & grill	2 Baltimore St.	Pizza Hut	237 Buford Ave.
Chinatown Kitchen	25 York St.	Perkins	859 York Rd.
Gettysburger	35 Chambersburg St.	Hoss's Steak and Sea	1140 York Rd.

### **Laundry:**

*(drop-off  
and  
self-service)*

Dolly's Washhouse  
39 N. Washington St  
Gettysburg, PA 17325  
(717) 337-3539

J.C. Cleaners and Tailors  
30 West Railroad St.  
Gettysburg, PA 17325  
(717) 334-1517

### **Emergency**

#### **Numbers:**

*(must dial 9 then area  
code to get off-campus  
line)*

911 for Fire, Police, Ambulance & Rescue Squad  
Regional Poison Center: 1-800-722-5725  
Gettysburg Hospital (717) 334-2121  
147 Gettys Street

### **Travel**

**from North or South:** Take US 15 to US 30 (exit 81 B). Travel west on US 30, approximately 5 miles to Stratton Street and turn right at stop light onto Stratton Street. Go less than one block to Race Horse Alley, and turn left into the alley (just before the Fire Station). Trucks over 30' will need to back up Race House Alley (crossing Stratton Street) one block to the loading dock of the Majestic on the driver's side. The theater is on the west side of the Borough Parking Garage.

**From East or West:** Take US 30 to Stratton Street. This is one block east of the town square. Follow directions given above for travel from North or South.

**Please note that trucks over 48 feet are not allowed in the downtown area of the Borough of Gettysburg. They may only come to the theater and leave.**

### **Special**

#### **Needs:**

**Wheel Chair Space:** There are spaces for wheelchair seating located in the front row of the orchestra seating and on either side of the tech. booth at the back of the orchestra seating area. There are also transfer seats located in the house right and house left areas of the orchestra seating and the back row of the balcony seating.

**Assisted listening system:** All house seats are within range of an FM transmitter for the aurally challenged.

# CARPENTER

06/2024

**Seating:**

Total 800

Main Floor: 606

Balcony: 194

## Stage

**Dimensions**

Proscenium Width.....	41'-6"
Permanent Columns in place at Proscenium opening is .....	34'-6"
Proscenium Height.....	18'-0"
Plaster Line to Pit.....	3'-10"
Plaster Line to Pit Rail at Center.....	11'-8"
Plaster Line to U. S. Wall at Center.....	29'-0"
Center Line to S.R. Wall.....	32'-9"
Center Line to Pin Rail S.L. Wall.....	30'-0"
Orchestra Pit Depth @ Stage .....	8'-0"
Stage Height from House Floor .....	3'-2"
Stage Height & Row C Height.....	0'-0"
Grid Height .....	37'-4"
Low Trim .....	5'-0"
High Trim.....	33'-10"
Loading Bridge Height .....	30'-2"
Locking Bridge Height .....	12'-0"
Proscenium to S.L. Wall .....	9'-4"
Proscenium to S.R. Wall.....	12'-3"

**Floor**

The floor is 1" Tongue and Groove Oak with a base of 2" x 12" sleepers. The Oak flooring is covered with 4 by 8 sheets of 1/2" Plyron. Floor has one trap center, center of stage. The theater does not own a vinyl dance floor. With prior permission from the technical director, lag bolts and deck screws may be used, and holes up to 1/2" may be drilled providing they are removed and plugged with hardwood dowels.

Note: *Masking tape is not to be used on the stage floor.* Vinyl tape, gaffer's tape and cloth spike tape are acceptable if removed after the event.

**Stage Access**

USL: 3' x 7' doorway to crossover, scenery storage, and dressing rooms

USC: 9' x 9' doorway to scenery storage and elevator

USR: 3' x 7' doorway to crossover, scenery storage, and dressing rooms

**Orchestra Pit**

SR to SL: 40' - 2" at wide's edge usage space 34'2"

Depth: 8'

DS to US: 8' with 1' - 0" additional under stage

Access: Doors at either end of the pit lead to S.R. and S.L. Dressing room corridor.

# CARPENTER

06/2024

## Soft Goods

(See line plot for standard house hang)

### Main Curtain

Custom pattern red and gold color fabric  
Manually operated as traveler from SL or guillotine from SL

### House Drapery

Traveler (2) - Two sections 18' 0" H x 25'6" W black velour 20 oz / 50% box pleat fullness

Full black (1) – Two panels 18'0" H x 25'6" W black velour 20 oz / 50% box pleat fullness

Legs (3 pair) - 18' 0" H x 8' 0" W black velour 20 oz / 50% box pleat fullness

Legs (5 pair) – 25'0" H x 10'0" W black velour 20 oz / flat

Borders (5) – 6' 0" H x 48' 0" W black velour 20 oz / 50% box pleat fullness

Full black/leg panels (4) - 18'0" H x 18'0" W black velour 20 oz / flat

Scrim (1) - Black seamless sharktooth 18' 0" x 48' 0"

Cyclorama (1) - Natural muslin 18' 0' x 48' 0"

## Load-in

### Loading Dock

Located on the south side of the building at the southeast corner

Loading Dock: Height: 4' - 0"

(1) Bay door 8'6" H x 8' W East side

(1) Bay door 9'6" H x 8' W West side

The loading dock is serviced by a 72' long x 24' wide concrete that can accommodate two trucks, or Buses. One truck may have to be disconnected from trailer the other may remain in the load-in area

### Load in door:

The loading dock provides direct access to a large storage area and the freight elevator to stage level and backstage support area 13' down, additional dressing rooms second level down

Elevator approx 9' High by 9' Wide by 12' Deep

Larger length pieces of scenery can be off loaded in the Truck port and wheeled around the east side of the building (ramping runs along east side 4-foot-wide) to a side door on the north side door opening (6'0" by 10'0")

# CARPENTER

06/2024

## Parking

Two vehicles may remain parked at the loading dock area per the Technical Directors discretion. A car-parking garage is located next door to the theater for personal vehicles.

Parking rates are \$1.00 / hour.

Note: Private vehicles must be moved after unloading.

*Unauthorized vehicles will be towed at the owner's expense.*

**NOTE: Generators for truck or bus power are not allowed to run when parked in the loading dock. Shore power is available if tails and necessary cable are provided. If generators are needed the bus/truck will be relocated to another parking area after they have been unloaded.**

## Additional Information

**The technical director must approve all use of pyrotechnics or open flame.** In addition, a permit for pyrotechnics **MUST BE OBTAINED** from both the Pennsylvania State Fire Marshal and the Borough of Gettysburg. A demonstration of the effect may be required from the local fire marshal to determine the safety of the device and its use.

# HOUSE LINE PLOT

06/2024

LINE	STANDARD HANG	DISTANCE FROM PLASTER LINE	DISTANCE FROM PREVIOUS BATTON
0	Movie screen*	-0'7"	n/a
1	Valance*	1'-1"	1'-0"
2	Main Curtain *	2'-0"	1'-0"
3	First Electric (motorized)	3'-6"	1'-5"
4	1 <sup>st</sup> border	4'-10"	1'-4"
5	Open	5'-4"	0'-6"
6	1 <sup>st</sup> Leg	5'-10"	0'-6"
7	Open	6'-4"	0'-6"
8	Open	6'-10"	0'-6"
9	Ceiling #1*	7'-9"	0'-11"
10	Open	9'-4"	0'-6"
11	2 <sup>nd</sup> Border	9'-10"	0'-6"
12	2 <sup>nd</sup> Leg	10'-4"	0'-6"
13	Second Electric (motorized)	11'-5"	0'-11"
14	Open	13'-3"	1'-10"
15	3 <sup>rd</sup> Border	13'-9"	0'-6"
16	Mid Stage Traveler*	14'-10"	1'-1"
17	Ceiling #2*	15'-10"	1'-0"
18	Open	16'-9"	0'-11"
19	Open	18'-3"	1'-6"
20	4 <sup>th</sup> Border	18'-9"	0'-6"
21	3rd Legs	19'-3"	0'-6"
22	Third Electric (motorized)	20'-10"	1'-7"
23	Open	22'-4"	1'-6"
24	5 <sup>th</sup> Border	23'-3"	0'-11"
25	Up-stage Traveler*	23'-9"	0'-6"
26	Open	24'-3"	0'-6"
27	Ceiling #3*	25'-4"	1'-1"
28	Fourth Electric	26'-10"	1'-6"
29	Open	27'-4"	0'-6"
30	Cyc	28'-4"	1'-0"

- \* Will not be removed
- \*\*Will be removed with prior approved notice
- Arbors weight limit is 1000 pounds
- Motorized electrics trim out at 25'0"
- Trims to bottom of ceiling # 1 is 26'10", #2 & #3 are 25'10"

# ELECTRICAL

06/2024

- Light Booth:** Located back-of-house approx. 62' from the plaster line centered under the balcony.
- Power:** 600 Amp 3 Phase, 120/208V disconnect on the SL upstage wall for touring company use.  
200 Amp 3 Phase service in loading dock drive area.  
*Note: Facility does not have a feeder for tie in.*
- Dimmers:** 294 2.4 KW ETC Sensor Dimmers dedicated to performance lighting and Architectural lighting.
- Control:** Main console: **ETC ION XE**, with (2) touch screen monitors and fader wing. Emphasis control system using ETC net 2.
- House Lights:** Four locations. ETC unison touch screen panels in the Tech booth, Projection booth, SL and SR. Houselights cannot be run through consoles and must be operated by a house crewmember.
- Cable:** Approximately 2000 feet of three pin stage cable available.
- Booms:** 8-12' booms. *No side arms are available*
- Circuits:** 200 ETC 2.4 dimmer per circuit (20 AMP grounded stage pin)
- FOH Positions:** FOH Catwalk:  
15'0" from the proscenium. This position is directly in front of the apron.  
With a 30 degree angle +28' - 0" throw to the stage 0' - 0".
- FOH Balcony Rail  
47' 0" from the proscenium. Mid-stage throw is approximately 50' 0" at 5 degrees angle + 38' 0" throw to the stage 0' - 0".
- House forms/  
Balcony booms:** House forms are located 12' 0" from the proscenium, balcony booms are located 38'0" from proscenium, and run at 45 and 30 degrees angle respectably.
- Spot booth:** Approximately 76' from proscenium. Mid-stage throw is approximately 100' 0" at 25 degrees angle +82' 0" from stage 0' - 0".

# ELECTRICAL

06/2024

**Stage Positions:** (all battens are 48'0" in length)  
1st Elec. 3'3" from plaster line  
2nd Elec. 11'5" from plaster line  
3rd Elec. 20'10" from plaster line  
4<sup>th</sup> Elec. 26'4" from plaster line

**Drop Boxes:** (Boxes are located in grid 35' SL & SR of center line.)  
Box 1 & 2 8'6" from plaster line  
Box 3 & 4 17'0" from plaster line  
Box 5 & 6 26'9" from plaster line

**Instruments:** Arrangements must be made in advance for rental and installation.

04 10° Source 4 barrels  
20 19° Source 4 Used primarily in FOH Balcony positions.  
40 26° Source 4 Used primarily in FOH Cove, and house box booms.  
06 26° Source 4 barrels  
40 36° Source 4  
36 50° Source 4  
36 PAR Source 4 Wide, Medium, Narrow, or Very Narrow  
20 Chauvet SlimPAR Pro H USB LED pars  
40 Altman PAR 64  
04 Altman PAR 56  
10 Chauvet Colorado Batten 72 Tour LED strip lights  
04 Stand Iris 3 3 circuits  
12 Stand Iris 1  
49 Source Four Gobo Holder and small assortment of Gobo's  
08 Drop in Iris units

**Follow Spot:** 4 – Source 4 14 degree 750 watt units with follow spot modification kits. Spots are located in the Projection booth. Follow spots do not have color boomerangs.  
*Note: Follow Spots could be moved to other locations with advanced notice and discussion.*

## VIDEO

**Multi-media digital projector:** Panasonic PT-DZ68OUK DLP projector. The projector is located on a shelf centered on the front of the balcony and cannot be moved. Available inputs for the projector are: Composite (RGB), VGA, HDMI, DVID, and S-video. The Majestic supports inputs through Composite, VGA, and HDMI. The projector can run media from BluRay, computer, and DVD. The Majestic has BluRay and DVD players in house, all other media sources need to be supplied.

**Accessories:** 15' - 0" x 35' - 0" cinema screen located at -0'7" from plaster line  
*Note: Cannot be removed.*

1 - 24' Genie electric vertical lift, 1 – 21' Skyscraper, 1- 17' Skyscraper, 1- 12', 1- 8', & 2 - 6' ladders.



# ELECTRICAL

06/2024

## Circuiting

**Circuit Chart:** (HR to HL, SL to SR, unless noted)

Front of House			
Catwalk	1-36	SL Drop Boxes	1-DS 177-178
HR Balcony box boom	37-39	Mounted to run rail.	2-CS 181-182
House Balcony right	40-45		3-US 185-186
House Balcony left	46 -51		
HL Balcony box boom	52-54	SR Boxes	1-DS 179-180
HR Torm	55-58	(c-clamp mounted)	2-CS 183-184
HL Torm	59-62	(85' cables)	3-US 187-188
Orchestra Pit SL	201-203		
Orchestra Pit SR	204-206	Grid boxes SL	1DS 95-100
First Electric	63-94		2CS 133-138
Second Electric	132-101		3US 171-176
Third Electric	170-139	Trap area under stage	198-200
Work Lights on stage	one circuit on each	SL Rear	189-191
	onstage electric,	Center Rear	192-194
	12&24 in FOH cove.	SR Rear	195-197

# SOUND

06/2024

- House Mix:** Center of House under the balcony (At front edge). Approximately 62'0" from stage.
- Power:** SL back wall 200 Amp Disconnect 120/208 V, 3 Phase
- Main Console:** Soundcraft VI3000 40 channels
- Speaker Cluster:** Permanently mounted House right and left  
8 – JBL VRX932LA line array cabinets: 4 per side
- Additional speakers:** 4 – JBL VRX918S single 18" passive sub cabinets  
4 – JBL AC25 2 way 5.25" front fill speakers
- Monitor Speakers:** 10 - JBL /SRX 712M floor monitors
- Amplifiers:** 3 – Crown I-Tech 4x3500 HD Drive core for main clusters, subs, and front fills  
3 - QSC / RMX2450 for monitors
- Production intercom; Clearcom/ MS232** 1 – channel intercom station
- Microphones:**
- 8- Shure/ Beta 58
  - 6- Shure 57
  - 3- Shure SM 81
  - 2- Shure microflex
  - 8 - Shure / QLXD WL93 wireless lavalier
  - 8- Shure / QLXD WL93 wireless lavalier
  - 8- Shure / QLXD wireless handheld 58 heads. 4 - 87 heads available. (Shared channels with lavaliers)
  - 4- AKG 414
  - 5- Audio Technica / AT853Rx hanging microphones
  - 6- Audio-Technica /AE3300 hand held condenser
  - 3- Audio-Technica / AT871R pzm
  - 6- Whirlwind / Director passive direct boxes
  - 16- Atlas/TL34-15E tripod, boom mic stands
  - 8- Atlas/DMS-10E tripod mic stands
  - 4- Ultimate clutch straight stands
  - 8- Atlas/ PB11XE boom arms
  - Assorted microphone cables, audio cables, and adapters

# PROPERTIES

06/2024

- Storage:** There is limited storage in the loading dock area and some storage on the stage level. At times trucks may be necessary for additional storage.
- Equipment:**
- 80 - Wenger Roughneck music stands
  - 60 - Music stand lights
  - 65 - Wenger Musician Posture Chairs
  - 10 - Cello chairs
  - 6 - 28" Wooden stools black
  - 6 - 6' Tables
- Orchestra Shell** Wenger custom orchestra shell:
- 3 – Forte ceiling sections:
    - Ceiling #1 – 40'10" long x 6'0" wide, line set #9
    - Ceiling #2 – 37'7" long x 7'0" wide, line set #17
    - Ceiling #3 – 33'6" long x 7'0" wide, line set #27
  - 15 – Legacy Select ground shell units: 13'8" high x 5'0" wide
- Platform Riser** Wenger Versa Deck:
- 16 – 4' x 8' sections
  - 4 – 4' x 4' sections
  - 8" legs, 16" legs, 24" legs, 32" legs
  - 4 – 8' railing sections
  - 2 – 4' railing sections
  - Stair units at 16" and 24"
- Choir Risers** Wenger: Wenger Signature Riser 7 sections 3 step with rail
- Pianos**
- Steinway: 9' Model D Concert Grand
  - Mason and Hamlin 50: Upright 50" piano

# Production and Support Areas

06/2024

**Dressing Rooms:** Chorus 1 basement level 12' W x 11' D w/ shower  
Chorus 2 basement level 8' W x 18' D w/ shower  
Chorus 3 stage level 13' W x 19' D w/ shower  
Chorus 4 stage level 12' W x 19' D w/ shower  
Star Dressing stage level 9' W x 16' D w/ shower

**All dressing rooms listed below are located directly underneath the stage:**

Historic dressing room 1 basement level 6' W x 12' D  
Historic dressing room 2 basement level 6' W x 12' D  
Historic dressing room 3 basement level 6' W x 12' D  
Historic dressing room 4 basement level 7' W x 12' D  
1 - Single restroom w/shower available for all 4 Historic dressing rooms

**Laundry:** Located in Basement Level area there is one washer and one dryer.

**Green Room:** Stage Level with microwave, refrigerator, and coffee maker. Ice is available.

**Production Office:** Typically, Star dressing room is converted into production office.

**Internet access:** WIFI is password protected. Passwords will be distributed to the company upon arrival.

**Crossover:** Crossover is through the stage prep area that is directly behind the stage proper. The stage level dressing rooms are located off of this prep area.

**Handicap Access:** All areas backstage are handicap accessible from the lobby and the stage. All entrances to the building are handicap accessible except the loading dock.

**Building Entry:** Performer entrance is located on the east side of the building at the north-east corner through the STAGE DOOR; this is the only red door on the building that says STAGE DOOR. This door can be locked during performance if requested. Security personal can posted if requested in advance.

## **MAJESTIC THEATER ACCESSIBILITY**

The Majestic Theater welcomes all audience members, performers and, crews and strives to make its programs, performances, events and facilities accessible to people with disabilities. Artist/ Company agree to cooperate fully with the Majestic's accessibility coordinators to provide accommodation for patrons, including but not limited to the following: assistive listening system, audio description, captioning, and sign language interpretation.

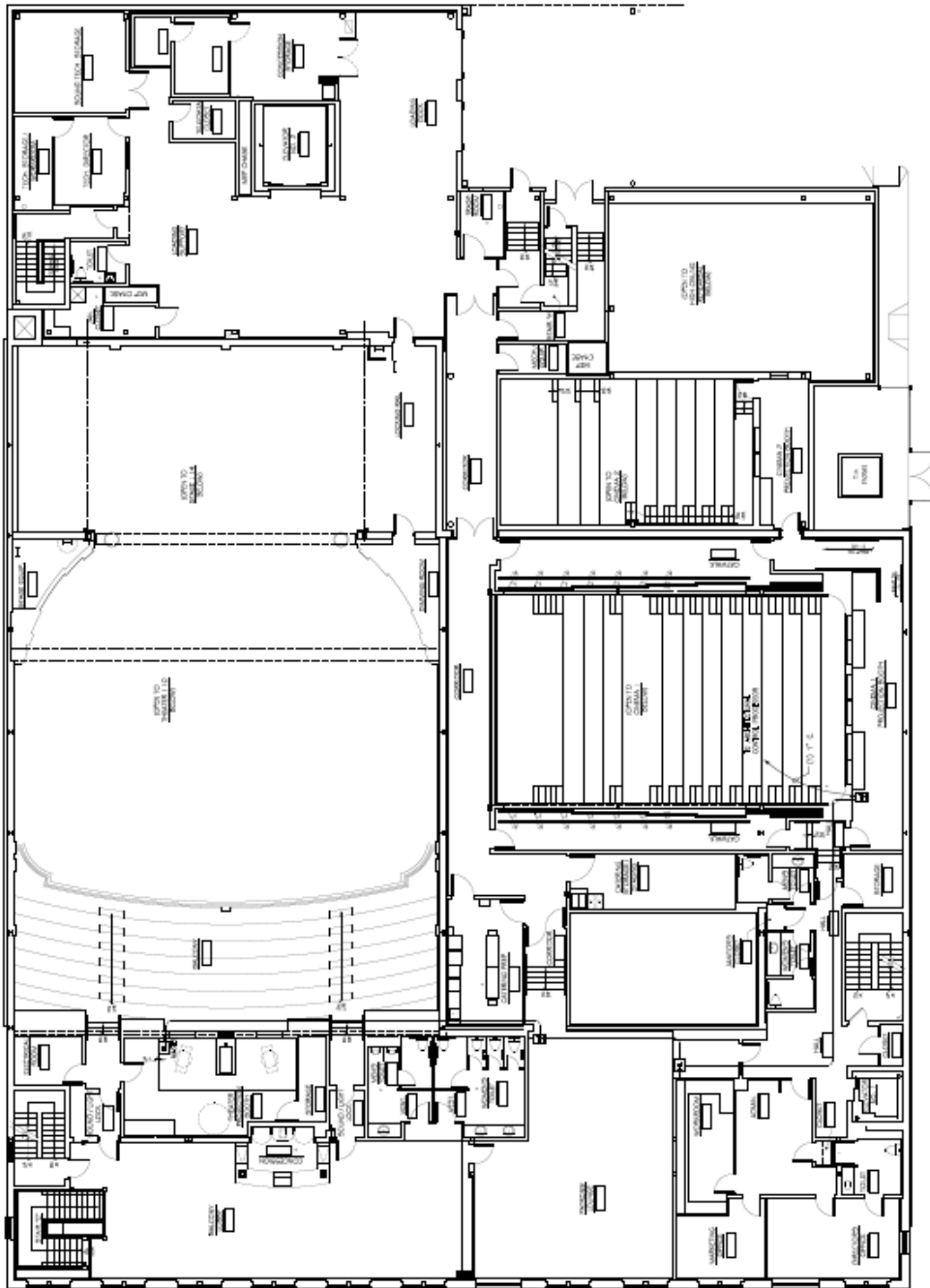
Artist/ Company shall promptly provide all necessary information (scripts, song lyrics, etc.) if requested, approximately three (3) weeks in advance of this performance, to facilitate audio description, computer-aided real-time captioning (CART), and or sign language interpretation.

Artist/ Company agree that the Majestic's accessibility coordinators shall determine the location of the captioning display or interpreter(s) when either or both of these services are requested. The location shall be such that seated audience members using the service may comfortably and simultaneously, without having to swivel their heads, see the stage and the captioning display and/or interpreter(s).

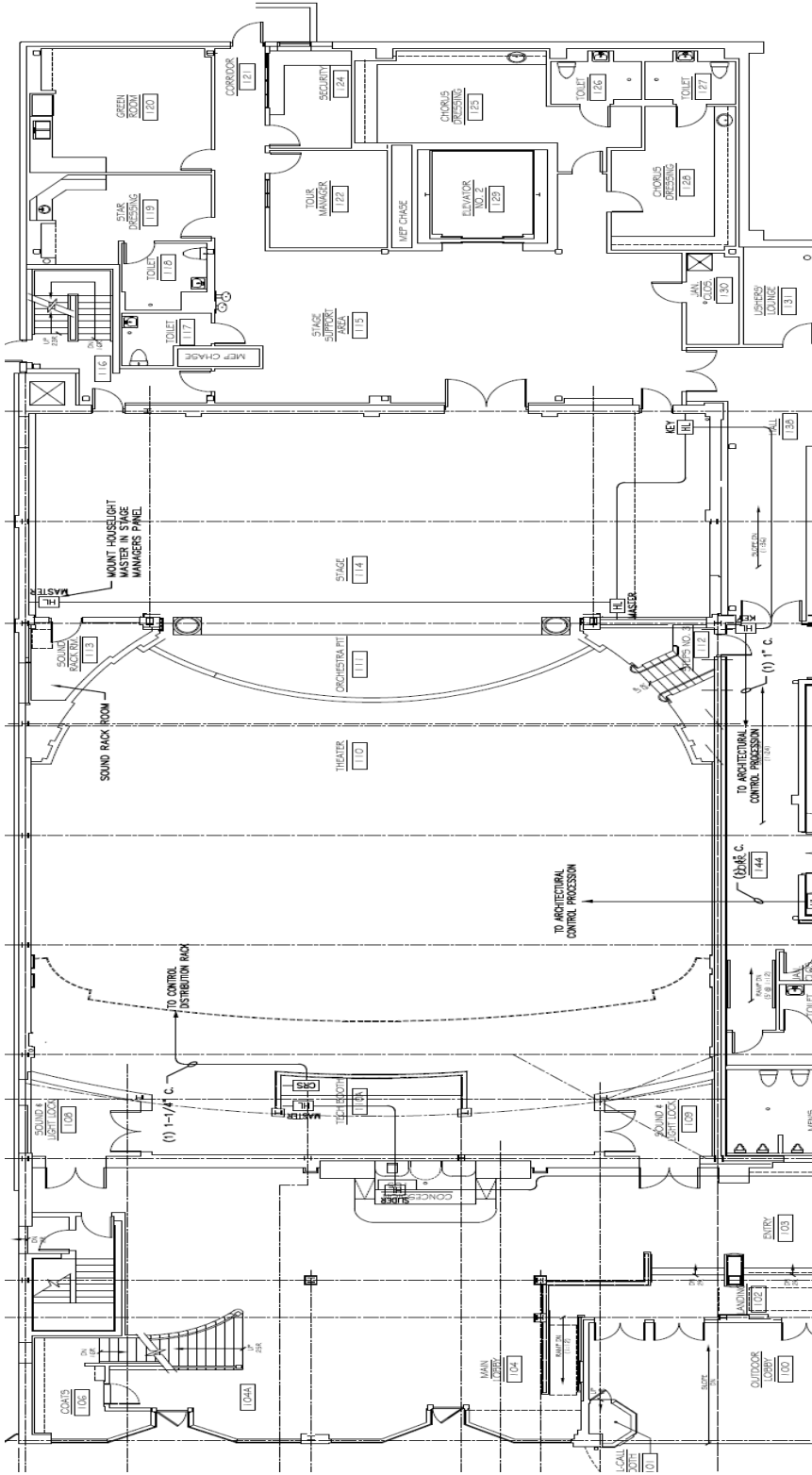
In most instances, the Majestic accessibility coordinators shall place the computer-aided real-time captioning (CART) display on the stage in the same plane as the performers and approximately two feet (2") above the stage floor

In most instances, the Majestic accessibility coordinators shall place the sign language interpreter(s) on the stage, in the same plane as the performers in the down right area.

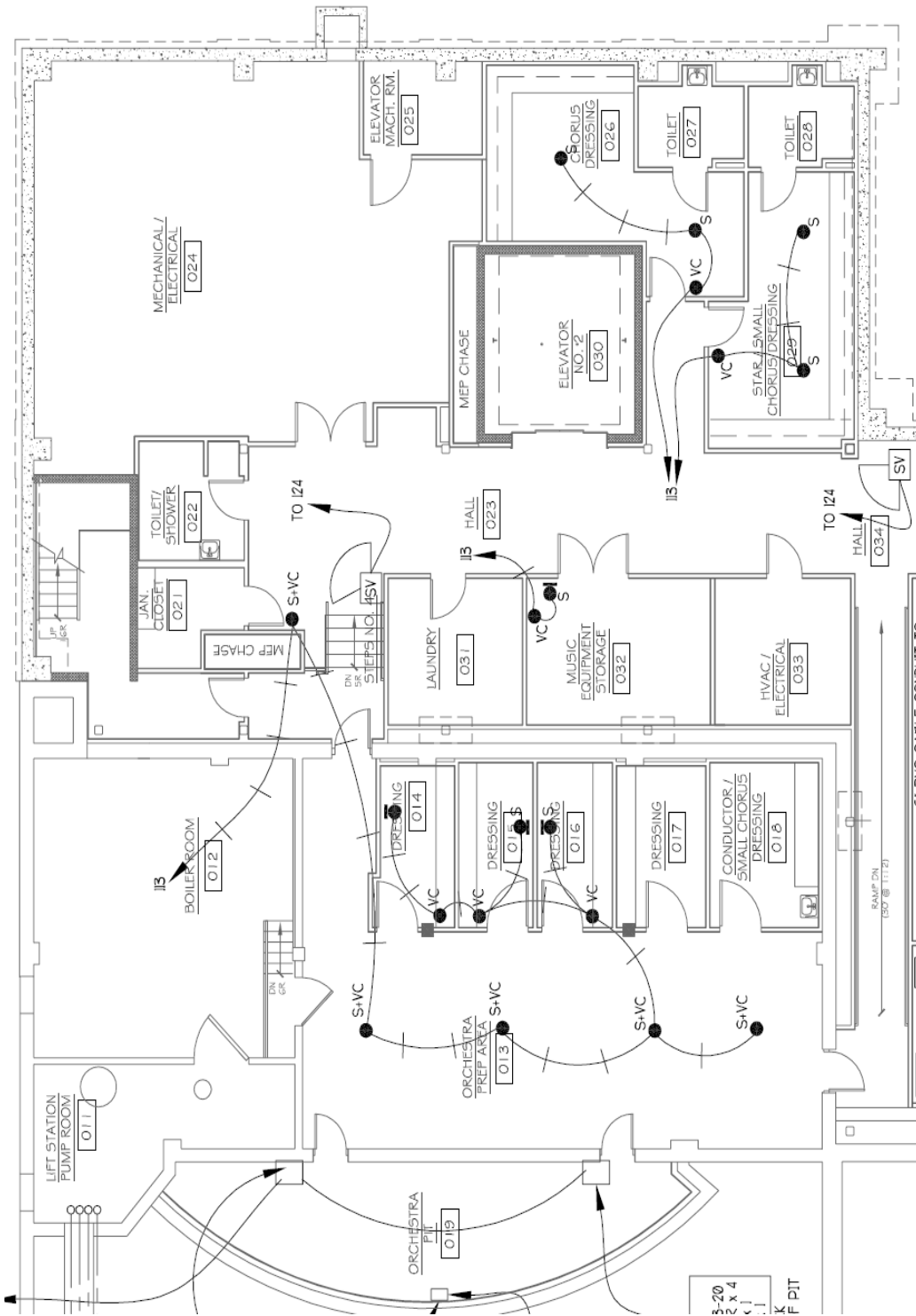
Sign language interpreter(s) must have direct lighting during the performance. The sign language interpreter(s) shall be illuminated by at least two instruments, which are focused so that there are no shadows or dark areas on the interpreter(s) face, torso, arms, or hands. Lighting for the sign language interpreter(s) is at full discretion of the Majestic accessibility coordinators.



Loading Dock Level



Stage Level



Basement Level